



**BINKS** **MX1231**  
**31:1 PUMP SYSTEMS FOR**  
**AIR ASSIST & AIRLESS FINISHING**

Patent 7,603,355



| SPECIFICATIONS  |   |
|---|---|
| Ratio:  | 31:1  |
| Maximum air inlet pressure:   | 8 bar [116 psi]   |
| Maximum fluid pressure:   | 248 bar [3596 psi]  |
| Displacement per cycle:   | 72 cc [02.4 oz]   |
| Output @ 60 cycles/min:   | 4.3 L/m [1.2 gal/m]   |
| Air consumption @ 20 cycles/min and 8 bar [116 psi] air inlet pressure: | 498 LPM [17.6 SCFM]   |
| Maximum recommended continuous cycle rate:                              | 20 cycles/min   |
| Air inlet connection:   | 3/8" BSP(f) and 1/4" NPS(m)   |
| Air piston diameter:  | 140 mm [5.5 in]   |
| Stroke length:  | 75 mm [3.0 in]  |
| Fluid inlet connection:   | 3/4" NPS(m)   |
| Fluid outlet connection:  | 3/8" BSP(m) / 3/8" NPS(m)   |
| Wetted parts materials of construction:                                 | Stainless Steel, Tungsten Carbide, Hard Chrome, PTFE, Polyethylene, Leather |
| Sound level:  | 97.3 dB   |

In this part sheet, the words **WARNING**, **CAUTION** and **NOTE** are used to emphasize important safety information as follows:

## **WARNING**

Hazards or unsafe practices which could result in severe personal injury, death or substantial property damage.

## **CAUTION**

Hazards or unsafe practices which could result in minor personal injury, product or property damage.

## **NOTE**

Important installation, operation or maintenance information.

## **WARNING**

### Read the following warnings before using this equipment.



#### READ THE MANUAL

Before operating finishing equipment, read and understand all safety, operation and maintenance information provided in the operation manual.



#### OPERATOR TRAINING

All personnel must be trained before operating finishing equipment.



#### EQUIPMENT MISUSE HAZARD

Equipment misuse can cause the equipment to rupture, malfunction, or start unexpectedly and result in serious injury.



#### LOCK OUT / TAG-OUT

Failure to de-energize, disconnect, lock out and tag-out all power sources before performing equipment maintenance could cause serious injury or death.



#### AUTOMATIC EQUIPMENT

Automatic equipment may start suddenly without warning.



#### PRESSURE RELIEF PROCEDURE

Always follow the pressure relief procedure in the equipment instruction manual.



#### KEEP EQUIPMENT GUARDS IN PLACE

Do not operate the equipment if the safety devices have been removed.



#### KNOW WHERE AND HOW TO SHUT OFF THE EQUIPMENT IN CASE OF AN EMERGENCY



#### WEAR SAFETY GLASSES

Failure to wear safety glasses with side shields could result in serious eye injury or blindness.



#### INSPECT THE EQUIPMENT DAILY

Inspect the equipment for worn or broken parts on a daily basis. Do not operate the equipment if you are uncertain about its condition.



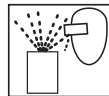
#### NEVER MODIFY THE EQUIPMENT

Do not modify the equipment unless the manufacturer provides written approval.



#### NOISE HAZARD

You may be injured by loud noise. Hearing protection may be required when using this equipment.



#### PROJECTILE HAZARD

You may be injured by venting liquids or gases that are released under pressure, or flying debris.



#### PINCH POINT HAZARD

Moving parts can crush and cut. Pinch points are basically any areas where there are moving parts.



#### STATIC CHARGE

Fluid may develop a static charge that must be dissipated through proper grounding of the equipment, objects to be sprayed and all other electrically conductive objects in the dispensing area. Improper grounding or sparks can cause a hazardous condition and result in fire, explosion or electric shock and other serious injury.



#### WEAR RESPIRATOR

Toxic fumes can cause serious injury or death if inhaled. Wear a respirator as recommended by the fluid and solvent manufacturer's Material Safety Data Sheet.



#### TOXIC FLUID & FUMES

Hazardous fluid or toxic fumes can cause serious injury or death if splashed in the eyes or on the skin, inhaled, injected or swallowed. LEARN and KNOW the specific hazards or the fluids you are using.



#### FIRE AND EXPLOSION HAZARD

Improper equipment grounding, poor ventilation, open flame or sparks can cause a hazardous condition and result in fire or explosion and serious injury.



#### MEDICAL ALERT

Any injury caused by high pressure liquid can be serious. If you are injured or even suspect an injury:

- Go to an emergency room immediately.
- Tell the doctor you suspect an injection injury.
- Show the doctor this medical information or the medical alert card provided with your airless spray equipment.
- Tell the doctor what kind of fluid you were spraying or dispensing.



#### GET IMMEDIATE MEDICAL ATTENTION

To prevent contact with the fluid, please note the following:

- Never point the gun/valve at anyone or any part of the body.
- Never put hand or fingers over the spray tip.
- Never attempt to stop or deflect fluid leaks with your hand, body, glove or rag.
- Always have the tip guard on the spray gun before spraying.
- Always ensure that the gun trigger safety operates before spraying.

**IT IS THE RESPONSIBILITY OF THE EMPLOYER TO PROVIDE THIS INFORMATION TO THE OPERATOR OF THE EQUIPMENT. FOR FURTHER SAFETY INFORMATION REGARDING THIS EQUIPMENT, SEE THE GENERAL EQUIPMENT SAFETY BOOKLET (77-5300).**

## ! WARNING



**HIGH PRESSURE CAN CAUSE SERIOUS INJURY IF EQUIPMENT IS INSTALLED OR USED INCORRECTLY—READ, UNDERSTAND, AND OBSERVE ALL WARNINGS AND INSTRUCTIONS IN THIS MANUAL.**

### **INSTALL, OPERATE OR SERVICE THIS EQUIPMENT ONLY AFTER ALL INSTRUCTIONS ARE CLEARLY UNDERSTOOD.**

It is the responsibility of the employer to place this information into the hands of the operator.

#### **! WARNING**

Hazards or unsafe practices which could result in severe personal injury, death or substantial property damage.

#### **! CAUTION**

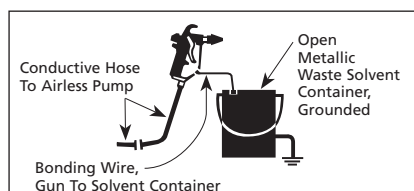
Hazards or unsafe practices which could result in minor personal injury, product or property damage.

#### **NOTE**

Important installation, operation or maintenance information.

#### **AVOID STATIC SPARKING**

1. Use Binks **NO-WIRE** conductive hose in all airless spraying operations. Be sure the gun and hose have continuity.
2. Make sure the pump is grounded. **NEVER** operate the unit when it is on a non-grounded platform.
3. When flushing or cleaning with a combustible solvent, always use an open metallic container for receiving the waste solvent. Ground the solvent receptacle.
4. **ALWAYS** remove spray tip when flushing the system. Operate the pump at the lowest possible pressure.



#### **GENERAL WARNINGS**

1. **NEVER** leave a pressurized sprayer unattended.
2. Periodically inspect all hoses for leaks and/or abrasions and tighten all connections before use. **DO NOT ATTEMPT TO REPAIR** a defective hose. **REPLACE** it with another conductive hose.
3. **ALWAYS** relieve pressure in the system by turning bypass valve to **BYPASS** or triggering spray gun before disassembly of any component parts.

#### **CAUTION**

Never store de-ionized, distilled, reverse osmosis or any pure grade of water in the pump. These fluids may cause corrosion.

#### **NOTE**

BINKS is not responsible for misapplication of pumps. Consult your BINKS representative for application assistance.

#### **NOTE**

Be sure that all fluids, solvents and fillers to be used are chemically and physically compatible with wetted parts in the pump. Consult your BINKS representative for pump materials of constructions and compatibility information. Consult the fluid manufacturer for information regarding the fluids to be used.


#### **REPLACEMENT PARTS**

The pump is designed to use authorized parts only. When using this pump with parts that do not comply with the minimum specifications and safety devices of Binks, the user assumes all risks and liabilities.

#### **! WARNING**

##### **EXCESSIVE AIR PRESSURE**

Can cause personal injury, pump damage or property damage. Do not exceed maximum inlet air pressure as stated on motor model plate.

| HAZARD  | CAUSE   | SAFEGUARDS   |
|---|---|--|
| <p><b>EXPLOSION</b></p>  | <p><b>STATIC ELECTRICITY</b></p> <p>Use of this equipment in a potentially explosive atmosphere.</p> <p>Vapors from flammable liquids can catch fire or explode from static electricity discharges.</p> | <ol style="list-style-type: none"> <li>1. If installing this equipment in a potentially explosive atmosphere, check the ATEX equipment category and temperature ratings meet the requirements for the zoned area.</li> <li>2. Check electrical continuity of the air supply to earth — should be no greater than <math>10^6 \Omega</math>.</li> <li>3. Electrically bond all metallic equipment to earth. Should be no greater than <math>1 \Omega</math>.</li> </ol>  |
| <p><b>SPECIAL CONDITIONS FOR SAFE USE REQUIRED BY ATEX CERTIFICATION</b></p>                              | <p>Over pressurization of equipment can cause equipment failure or injury.</p> <p>Use lubricating medium resistant to carburisation.</p> <p>Improper operation or maintenance may create a hazard.</p>  | <ol style="list-style-type: none"> <li>1. Do not exceed the stated maximum working pressures and motor speed as specified in this manual.</li> <li>2. Only a suitably approved static dissipating or conductive air supply hoses shall be attached to the equipment and terminated to the air supply.</li> <li>3. Air supplies (compressors, etc.) shall be sited in a non-hazardous area with a filter on the air intake system to prevent the ingress of dust or similar foreign material into the parts where compression takes place.</li> <li>4. Use lubricating medium resistant to carburisation and has an auto ignition temperature of more than <math>185^{\circ}\text{C}</math> for T4 equipment.</li> <li>5. User shall ensure all metallic parts of the equipment are suitably bonded to earth. Should be no greater than <math>1 \Omega</math>.</li> </ol> |

## STARTUP AND OPERATION

(Part numbers referenced are contained in the MX1231 bare pump assemblies part sheet: 77-2918.)

### GROUNDING THE BINKS PUMP

#### **⚠ WARNING**

To prevent static charging igniting the flammable spray material, the BINKS pump must be grounded before it is started up. A grounding cable is included with the pump.

1. Clamp the grounding cable to the terminal on the high pressure filter or the air motor.
2. Connect the other end of the grounding cable to a suitable grounding device (e.g. grounding bar).

### PREPARING TO START UP THE BINKS PUMP

Proceed as follows:

1. Check that the solvent cup is full to the level shown. If necessary, add material to the solvent cup. (Order part no. 0114-009433 for solvent based paint, and part no. 0114-014871 for waterborne paint.)
2. Select a suitable filter element using the table in this manual (page 9) and insert it into the high pressure filter.
3. Attach a suitable fluid hose to the outlet fitting on the high pressure filter.



#### **⚠ WARNING**

The fluid hose supplied by BINKS is identified with the maximum permitted working pressure and the bursting pressure. The lesser value—the maximum permitted working pressure—must be greater than the maximum permitted working pressure of the pump.

4. Connect the gun—designed at least for the maximum permitted working pressure of the pump—to the fluid hose.
5. Make sure that the ball valve on the air control assembly is closed.
6. Connect the compressed air supply to the air inlet connection.
7. The pump is equipped with an air pressure regulator. Before putting the

pressure line into operation, relieve the pressure regulator by fully unscrewing the regulating screw. Thereafter rotate the regulating screw clockwise until the pressure gauge on the regulator indicates the required pressure.

#### **NOTE**

The pump is equipped with an air pressure safety valve set at 8 bar (116 psi).

### RINSING THE BINKS PUMP

#### **⚠ WARNING**

Wear eye protection.

Every BINKS pump is tested with water during final inspection and thoroughly rinsed with a non-gumming preservative oil. With this rinsing process, it is possible that the residual moisture of water emulsion will be left in the pump.

Before the unit is started up for the first time, a suitable solvent must be used to thoroughly rinse out the remains of the preservative fluid and the unavoidable impurities introduced during equipment assembly.

Proceed as follows:

1. Prepare the BINKS pump for start-up as shown above.
2. Close the high pressure ball valve on the fluid filter.
3. Immerse the siphon kit in the tank of solvent.
4. Insert the return flow hose into the tank of solvent. Open the high pressure ball valve on the fluid filter.
5. Open the ball valve and set the air regulator to approximately 1 bar (14.5 psi). The siphon kit now draws in the solvent. The solvent runs back to the solvent tank through the high pressure filter, the high pressure ball valve and the return flow hose.
6. Remove the spray tip from the gun and point the gun into the tank. Unlock the safety lever on the gun, operate the gun and close the high pressure ball valve. The solvent will now flow through the high pressure filter, the fluid hose and the gun, back into the tank. The time of rinsing depends on

the length of the material lines and the solubility of the spray material. We recommend a short reflux with "fresh" solvent.

7. Release the gun trigger.
8. Slowly increase the pressure at the regulator to maximum working pressure while checking and testing that all lines and screw and plug caps are tightly sealed. If there are any leaks in the system, shut down the BINKS pump immediately. Only re-start the BINKS pump once you have repaired the leak.
9. Reduce the air pressure at the air regulator again and close the ball valve.
10. Make sure that the return flow hose is still directed into the solvent tank. Carefully open the high pressure ball valve to reduce the pressure in the fluid hose and in the high pressure filter.
11. Point the gun into the tank of solvent and operate the trigger, to reduce any pressure which may still exist in the fluid hose and in the gun.

#### **⚠ CAUTION**

If working with waterborne material, the BINKS pump must again be thoroughly rinsed with water before it is started up.

### START-UP

1. Prepare the BINKS pump for start-up as shown above and if necessary, rinse pump.
2. Close the high pressure ball valve on the fluid filter.
3. Immerse the siphon kit in the spray material to be used.
4. Place the return flow hose in the tank. Then open the high pressure ball valve.
5. Open the ball valve for the compressed air supply and use the pressure regulator to set the compressed air supply to 1 bar (14.5 psi). The pump will now draw in the spray material. The spray material

(continued on next page)

## STARTUP AND OPERATION

flows back into the tank through the high pressure filter, the high pressure ball valve and the return pipe.

- Remove the spray tip from the gun and point the gun into the tank. Unlock the safety lever on the gun. Operate the gun trigger and close the high pressure ball valve. The spray material will now flow through the high pressure filter, the fluid hose and the gun, back into the tank.
- Release the gun trigger and set the working pressure at the regulator.

### NOTE

Before carrying out any coating work, we recommend a test spray (e.g. on to paper or wood). Only if the test gives you the desired result should you start to coat the actual object.

### WORK STOPPAGES

#### CAUTION

If working with 2-K spray material, you must note the given pot life and follow it precisely. Within this time, the unit must be carefully cleaned and rinsed with the recommended solvent. There must be no residue left in the pump, the high pressure filter or the gun.

#### CAUTION

When work is stopped, the safety lever of the gun must be locked.

For work stoppages of between 10 and 30 minutes, please proceed as follows:

#### WARNING

Wear eye protection.

- Lock the safety lever on the gun.
- Shut off the compressed air supply by closing the ball valve.
- Briefly open the high pressure ball valve, taking care that the return flow hose is not pointed at other people or at yourself, until the pressure has reduced. Then close the high pressure ball valve again.
- Clean the outside of the spray nozzle from spray material residue.

### SHUT-DOWN

#### CAUTION

Once work is completed, the BINKS pump must be thoroughly cleaned. Under no circumstances must you allow paint residue to dry out in the unit. To clean the pump, use a solvent appropriate to the spray material.

#### WARNING

Wear eye protection.

- Close the ball valve for the compressed air supply.
- Make sure that the flow hose is still directed into the spray material tank. Carefully open the high pressure ball valve to reduce the pressure in the pump and in the high pressure filter.
- Remove the spray tip from the gun.
- Point the gun into the tank of spray material and operate the trigger to reduce any pressure which may still exist in the fluid hose and in the gun.
- Lock the safety lever on the gun.
- Remove the siphon kit from the spray material.

### CLEANING YOUR BINKS PUMP

#### CAUTION

Do not allow spray material or solvent to soak into the ground.

#### WARNING

Wear eye protection.

- Clean the pump and the siphon kit from the outside. Immerse the suction system in the tank of solvent.
- Clean the fluid tip/tip system as described in the service bulletin of the spray gun. We recommend to soak the fluid tip in solvent.
- Unlock the safety lever of the gun without fluid tip. Operate the gun. Close the high pressure ball valve. Set the air inlet pressure to 1 bar (14.5 psi) and slowly open the ball valve. Let the solvent run through the system so that the spraying material can rinse out.
- Let the solvent run through the system for a couple of minutes until the solvent runs clear through the gun. Close the ball valve and lock the safety lever of the gun.
- Clean the gun from the outside and check the filter on the handle (if mounted).
- Clean the filter element of the high pressure filter.
- Clean the filter of the siphon kit.
- We recommend keeping the pump filled with liquid.

### NOTE

If the pump is not to be used for longer periods of time, we recommend flushing the system with a light, silicone-free oil.

### MX1231 CART MOUNTED SYSTEMS

# MX1231

-

# C

**SEALS**

PL = PTFE / Leather  
 PP = PTFE  
 PU = PTFE / UHMW  
 UC = U-Cups

**SPRAY GUN**

0 = none  
 G = AA4400 Flat Tip  
 H = AA4400 Twist Tip  
 P = Airless 75  
 T = TROPHY AA 4400 Flat Tip  
 U = TROPHY AA 4400 Twist Tip

**AIR CONTROL**

0 = none  
 D = Air Control

**FILTER**

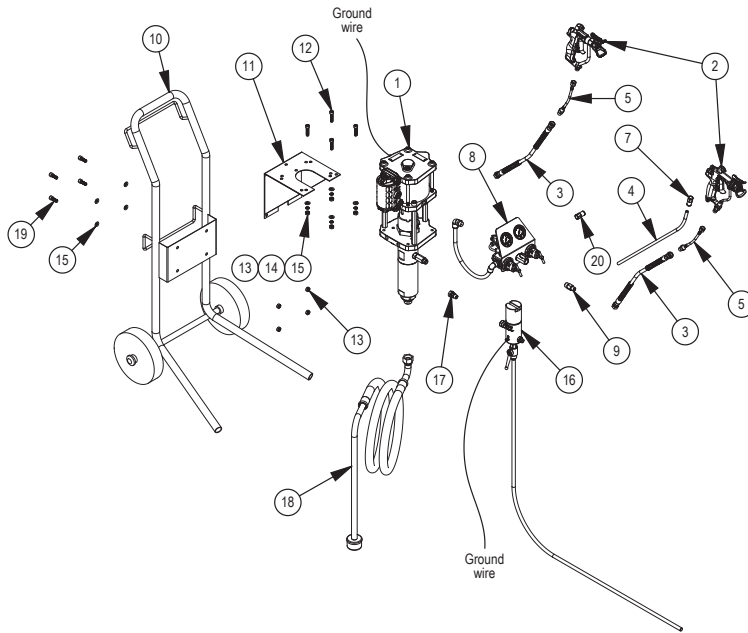
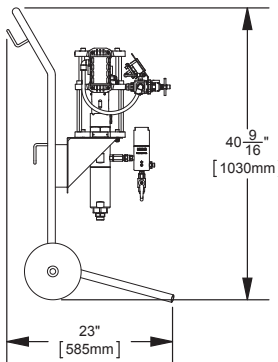
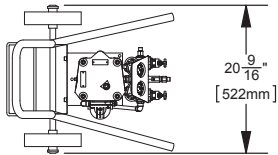
0 = none  
 1 = 100 mesh  
 2 = 200 mesh

**SIPHON**

0 = none  
 S = 5 gallon  
 T = 55 gallon

**HOSE**

00 = none  
 25 = 25 ft / whip  
 50 = 50 ft / whip



### SYSTEM COMPONENT LIST

| ITEM NO. | PART NUMBER      | DESCRIPTION                                  | QTY                        | PART SHEET        |
|----------|------------------|--|----------------------------|-------------------|
| 1        | MX1231PL         | BARE PUMP ASSEMBLY (PTFE/LEATHER)            | 1 IF SEAL TYPE = PL        | 77-2918           |
|          | MX1231PP         | BARE PUMP ASSEMBLY (PTFE)                    | 1 IF SEAL TYPE = PP        |                   |
|          | MX1231PU         | BARE PUMP ASSEMBLY (PTFE/UHMW)               | 1 IF SEAL TYPE = PU        |                   |
|          | MX1231UC         | BARE PUMP ASSEMBLY (U-CUPS)                  | 1 IF SEAL TYPE = UC        |                   |
| 2        | 0909-4400-HF0000 | AA4400 GUN ASSEMBLY (FLAT TIP HOLDER)        | 1 IF GUN TYPE = G          | 77-2922           |
|          | 114-01310        | FLAT SPRAY TIP (1310)                        | 1 IF GUN TYPE = G OR T     |                   |
|          | 0909-4400-HT0000 | AA4400 GUN ASSEMBLY (TWIST TIP HOLDER)       | 1 IF GUN TYPE = H          | 77-2922           |
|          | 4400-HF0000      | TROPHY AA 4400 GUN (FLAT TIP)                | 1 IF GUN TYPE = T          | 77-3131           |
|          | 4400-HT0000      | TROPHY AA 4400 GUN (TWIST TIP)               | 1 IF GUN TYPE = U          |                   |
|          | 9-613-75         | TWIST SPRAY TIP (613)                        | 1 IF GUN TYPE = H OR U     |                   |
|          | 3                | 0811-7500-1                                  | AIRLESS 7500 GUN ASSEMBLY  | 1 IF GUN TYPE = P |
| 9-515-75 |                  | TWIST SPRAY TIP (515)                        | 1 IF GUN TYPE = P          |                   |
| 4        | 71-4830          | MATERIAL HOSE (1/4" ID X 25', 4000 PSI)      | 1 IF HOSE LENGTH = 25      |                   |
|          | 71-4831          | MATERIAL HOSE (1/4" ID X 50', 4000 PSI)      | 1 IF HOSE LENGTH = 50      |                   |
|          | 71-4803          | AIR HOSE (3/8" OD TUBE X 28FT)               | 1 IF HOSE LENGTH = 25      |                   |
| 5        | 71-4804          | AIR HOSE (3/8" OD TUBE X 53FT)               | 1 IF HOSE LENGTH = 50      |                   |
|          | 71-6844          | MATERIAL HOSE (1/8" ID X 3', 5000 PSI)       | 1 IF HOSE LENGTH = 25 / 50 |                   |
| 6        | 72-2332          | SWIVEL ADAPTER (1/4" NPS M X F) [NOT SHOWN]  | 1 IF GUN TYPE = P          |                   |
| 7        | 54-4976          | ADAPTER FITTING (3/8" OD TUBE X 1/4" NPS F)  | 1 IF GUN TYPE = G / H      |                   |
| 8        | 0115-010180      | AIR CONTROL ASSEMBLY                         | 1 IF AIR CONTROL = D       |                   |
| 9        | 83-4233          | DM NIPPLE (1/4" NPS/NPT X 3/8" NPS/NPT)      | 1 IF AIR CONTROL = D       |                   |
| 10       | 0115-010186      | TROLLEY ASSEMBLY                             | 1                          |                   |
| 11       | 0115-010179      | PUMP BRACKET                                 | 1                          |                   |
| 12       | 0115-010001      | SOCKET HEAD CAP SCREW (M8 X 35mm)            | 4                          |                   |
| 13       | 0115-010030      | HEX NUT (M8)                                 | 8                          |                   |
| 14       | 0115-010031      | LOCK WASHER (M8)                             | 4                          |                   |
| 15       | 0115-010035      | FLAT WASHER (M8)                             | 8                          |                   |
| 16       | 0115-010326      | S.S. FILTER ASSEMBLY (100 MESH)              | 1 IF FILTER TYPE = 1       |                   |
|          | 0115-010630      | S.S. FILTER ASSEMBLY (200 MESH)              | 1 IF FILTER TYPE = 2       |                   |
| 17       | 103-1238         | SWIVEL ADAPTER (3/8" NPS F X 1/4" NPT/NPS M) | 1 IF NO FILTER             |                   |
| 18       | 41-17262         | SIPHON TUBE ASSEMBLY (5 GALLON)              | 1 IF SIPHON SIZE = S       |                   |
|          | 0115-010381      | SIPHON TUBE ASSEMBLY (55 GALLON)             | 1 IF SIPHON SIZE = T       |                   |
| 19       | 0115-010227      | SOCKET HEAD CAP SCREW (M8 X 25)              | 4                          |                   |
| 20       | 85-521           | SWIVEL ELBOW (3/8" OD TUBE X 1/4" NPT)       | 1 IF AIR CONTROL = D       |                   |

## MX1231 WALL MOUNTED SYSTEMS

# MX1231

# W

### SEALS

PL = PTFE / Leather  
 PP = PTFE  
 PU = PTFE / UHMW  
 UC = U-Cups

### SPRAY GUN

0 = none  
 G = AA4400 Flat Tip  
 H = AA4400 Twist Tip  
 P = Airless 75  
 T = TROPHY AA 4400 Flat Tip  
 U = TROPHY AA 4400 Twist Tip

### AIR CONTROL

0 = none  
 D = Air Control

### FILTER

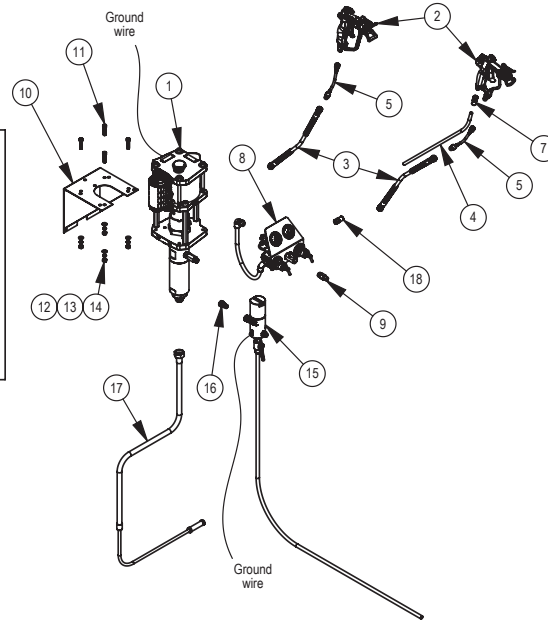
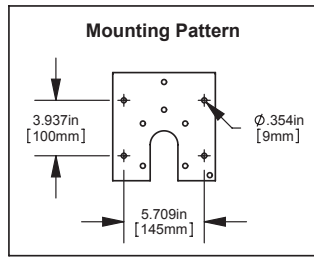
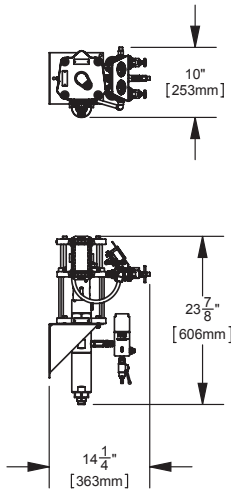
0 = none  
 1 = 100 mesh  
 2 = 200 mesh

### SIPHON

0 = none  
 S = 5 gallon  
 T = 55 gallon

### HOSE

00 = none  
 25 = 25 ft / whip  
 50 = 50 ft / whip



## SYSTEM COMPONENT LIST

| ITEM NO. | PART NUMBER           | DESCRIPTION                                  | QTY                        | PART SHEET |
|----------|-----------------------|--|----------------------------|------------|
| 1        | MX1231PL              | BARE PUMP ASSEMBLY (PTFE/LEATHER)            | 1 IF SEAL TYPE = PL        | 77-2918    |
|          | MX1231PP              | BARE PUMP ASSEMBLY (PTFE)                    | 1 IF SEAL TYPE = PP        |            |
|          | MX1231PU              | BARE PUMP ASSEMBLY (PTFE/UHMW)               | 1 IF SEAL TYPE = PU        |            |
|          | MX1231UC              | BARE PUMP ASSEMBLY (U-CUPS)                  | 1 IF SEAL TYPE = UC        |            |
| 2        | 0909-4400-HF0000      | AA4400 GUN ASSEMBLY (FLAT TIP HOLDER)        | 1 IF GUN TYPE = G          | 77-2922    |
|          | 114-01310             | FLAT SPRAY TIP (1310)                        | 1 IF GUN TYPE = G OR T     |            |
|          | 0909-4400-HT0000      | AA4400 GUN ASSEMBLY (TWIST TIP HOLDER)       | 1 IF GUN TYPE = H          | 77-2922    |
|          | 4400-HF0000           | TROPHY AA 4400 GUN (FLAT TIP)                | 1 IF GUN TYPE = T          | 77-3131    |
|          | 4400-HT0000           | TROPHY AA 4400 GUN (TWIST TIP)               | 1 IF GUN TYPE = U          |            |
|          | 9-613-75              | TWIST SPRAY TIP (613)                        | 1 IF GUN TYPE = H OR U     |            |
|          | 0811-7500-1           | AIRLESS 75 GUN ASSEMBLY                      | 1 IF GUN TYPE = P          | 77-2950    |
| 9-515-75 | TWIST SPRAY TIP (515) | 1 IF GUN TYPE = P                            |                            |            |
| 3        | 71-4830               | MATERIAL HOSE (1/4" ID X 25', 4000 PSI)      | 1 IF HOSE LENGTH = 25      |            |
|          | 71-4831               | MATERIAL HOSE (1/4" ID X 50', 4000 PSI)      | 1 IF HOSE LENGTH = 50      |            |
| 4        | 71-4803               | AIR HOSE (3/8" OD TUBE X 28FT)               | 1 IF HOSE LENGTH = 25      |            |
|          | 71-4804               | AIR HOSE (3/8" OD TUBE X 53FT)               | 1 IF HOSE LENGTH = 50      |            |
| 5        | 71-6844               | MATERIAL HOSE (1/8" ID X 3', 5000 PSI)       | 1 IF HOSE LENGTH = 25 / 50 |            |
| 6        | 72-2332               | SWIVEL ADAPTER (1/4" NPS M X F) [NOT SHOWN]  | 1 IF GUN TYPE = P          |            |
| 7        | 54-4976               | ADAPTER FITTING (3/8" OD TUBE X 1/4" NPS F)  | 1 IF GUN TYPE = G / H      |            |
| 8        | 0115-010180           | AIR CONTROL ASSEMBLY                         | 1 IF AIR CONTROL = D       |            |
| 9        | 83-4233               | DM NIPPLE (1/4" NPS/NPT X 3/8" NPS/NPT)      | 1 IF AIR CONTROL = D       |            |
| 10       | 0115-010179           | PUMP BRACKET                                 | 1                          |            |
| 11       | 0115-010001           | SOCKET HEAD CAP SCREW (M8 X 35mm)            | 4                          |            |
| 12       | 0115-010030           | HEX NUT (M8)                                 | 4                          |            |
| 13       | 0115-010031           | LOCK WASHER (M8)                             | 4                          |            |
| 14       | 0115-010035           | FLAT WASHER (M8)                             | 4                          |            |
| 15       | 0115-010326           | S.S. FILTER ASSEMBLY (100 MESH)              | 1 IF FILTER TYPE = 1       |            |
|          | 0115-010630           | S.S. FILTER ASSEMBLY (200 MESH)              | 1 IF FILTER TYPE = 2       |            |
| 16       | 103-1238              | SWIVEL ADAPTER (3/8" NPS F X 1/4" NPT/NPS M) | 1 IF NO FILTER             |            |
| 17       | 41-17262              | SIPHON TUBE ASSEMBLY (5 GALLON)              | 1 IF SIPHON SIZE = S       |            |
|          | 0115-010381           | SIPHON TUBE ASSEMBLY (55 GALLON)             | 1 IF SIPHON SIZE = T       |            |
| 18       | 85-521                | SWIVEL ELBOW (3/8" OD TUBE X 1/4" NPT)       | 1 IF AIR CONTROL = D       |            |



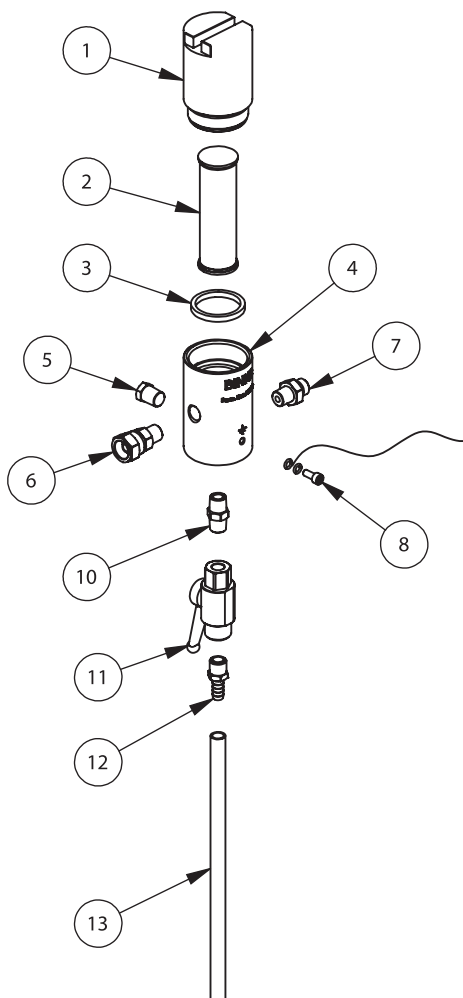
## STAINLESS STEEL HIGH PRESSURE FILTER ASSEMBLIES

0115-010326 (100 MESH FILTER ELEMENT)

0115-010630 (200 MESH FILTER ELEMENT)

| SPECIFICATIONS                          |                       |
|---|-----------------------|
| Max working pressure:                   | 272 bar [3945 psi]    |
| Fluid inlet connection:                 | 3/8" BSP (f)          |
| Fluid outlet connection:                | 1/4" NPS (m)          |
| Wetted parts materials of construction: | Stainless Steel, PTFE |

Additional filter mesh sizes (sold separately):  
For 50 mesh order: 0110-009131



### PARTS LIST

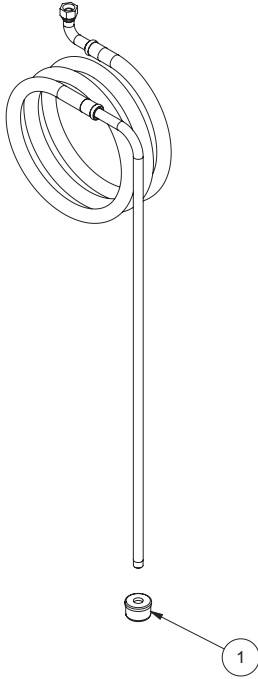
| ITEM NO. | PART NUMBER | DESCRIPTION              | 0115-010326 QTY | 0115-010630 QTY |
|----------|-------------|--------------------------|-----------------|-----------------|
| 1        | 0115-010399 | FILTER CAP               | 1               | 1               |
| 2        | 0110-009134 | 200 MESH FILTER ELEMENT  | 0               | 1               |
|          | 0110-009132 | 100 MESH FILTER ELEMENT  | 1               | 0               |
| 3        | 0114-016061 | GASKET                   | 1               | 1               |
| 4        | 0115-010398 | FILTER HOUSING           | 1               | 1               |
| 5        | 0115-010600 | PLUG                     | 1               | 1               |
| 6        | 0114-016058 | SWIVEL CONNECTING NIPPLE | 1               | 1               |
| 7        | 0114-016059 | OUTLET SCREW             | 1               | 1               |
| 8        | 0114-016243 | GROUND WIRE KIT          | 1               | 1               |
| 10       | 0114-019090 | OUTFLOW FITTING          | 1               | 1               |
| 11       | 0114-019091 | HIGH PRESSURE BALL VALVE | 1               | 1               |
| 12       | 0114-019985 | HOSE CONNECTION          | 1               | 1               |
| 13       | 0115-010327 | FILTER DRAIN HOSE        | 1               | 1               |

**SYSTEM ACCESSORIES**

**0115-010381 55-GALLON SIPHON KIT  
and  
41-17262 5-GALLON SIPHON KIT**

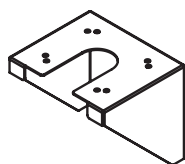
**PARTS LIST**

When ordering, please specify Part No.

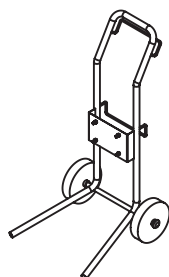


| ITEM NO. | PART NO. | DESCRIPTION                            | QTY. |
|----------|----------|--|------|
| 1        | 41-2661  | 1/2 NPSM x 30 MESH S.S. STRAINER. .... | 1    |

---

**ACCESSORIES FOR YOUR MX1231 PUMP**

**BRACKET**  
0115-010179



**TROLLEY ASSEMBLY**  
0115-010186

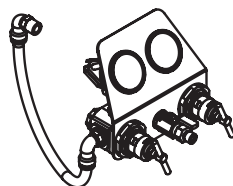


**FLUID FILTER (100 MESH)**  
0115-010326

**FLUID FILTER (200 MESH)**  
0115-010630



**SIPHON KITS**  
41-17262 (5 GAL)  
0115-010381 (55 GAL)



**AIR CONTROLS**  
0115-010180



**LUBRICATING OIL FOR  
FLUID PUMP**  
0114-009433 (Solvent Based Materials)  
0114-014871 (Water Based Materials)

## WARRANTY POLICY

This product is covered by Carlisle Fluid Technologies' materials and workmanship limited warranty. The use of any parts or accessories, from a source other than Carlisle Fluid Technologies, will void all warranties. Failure to reasonably follow any maintenance guidance provided may invalidate any warranty.

For specific warranty information please contact Carlisle Fluid Technologies.

Carlisle Fluid Technologies is a global leader in innovative finishing technologies. Carlisle Fluid Technologies reserves the right to modify equipment specifications without prior notice.

DeVilbiss®, Ransburg®, ms®, BGK®, and Binks®  
are registered trademarks of Carlisle Fluid Technologies, Inc.

©2019 Carlisle Fluid Technologies, Inc.  
All rights reserved.

For technical assistance or to locate an authorized distributor,  
contact one of our international sales and customer support locations.

| <b>Region</b>                         | <b>Industrial / Automotive</b>                       | <b>Automotive Refinishing</b>              |
|---------------------------------------|--|--|
| Americas                              | Tel: 1-800-992-4657<br>Fax: 1-888-246-5732           | Tel: 1-800-445-3988<br>Fax: 1-800-445-6643 |
| Europe, Africa,<br>Middle East, India | Tel: +44 (0)1202 571 111<br>Fax: +44 (0)1202 573 488 |  |
| China                                 | Tel: +8621-3373 0108<br>Fax: +8621-3373 0308         |  |
| Japan                                 | Tel: +81 45 785 6421<br>Fax: +81 45 785 6517         |  |
| Australia                             | Tel: +61 (0) 2 8525 7555<br>Fax: +61 (0) 2 8525 7575 |  |

For the latest information about our products, visit [www.carlisleleft.com](http://www.carlisleleft.com)