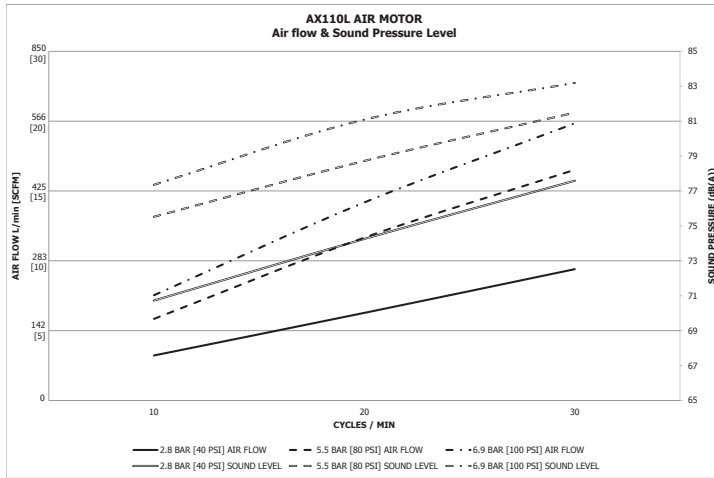


AX110L AIR MOTOR ASSEMBLIES



SPECIFICATIONS

	AX110L-5	AX110L-6	AX110L-7	AX110L-8
Maximum air inlet pressure:	5 bar [72.5 psi]	6 bar [87 psi]	7 bar [101.5 psi]	8 bar [116 psi]
Maximum recommended continuous cycle rate:	20 cycles/min [40 strokes]			
Maximum recommended intermittent cycle rate:	30 cycles/min [60 strokes]			
Air inlet connection:	3/8" BSPP / NPS (female)			
Nominal pump stroke:	127 mm [5 in]			
Maximum operating temperature:	71°C [160°F]			
Weight:	8 Kg [17.5 Lb]			

In this part sheet, the words **WARNING**, **CAUTION** and **NOTE** are used to emphasize important safety information as follows:

⚠ WARNING
 Hazards or unsafe practices which could result in severe personal injury, death or substantial property damage.

⚠ CAUTION
 Hazards or unsafe practices which could result in minor personal injury, product or property damage.

NOTE
 Important installation, operation or maintenance information.

⚠ WARNING

Read the following warnings before using this equipment.

READ THE MANUAL
 Before operating finishing equipment, read and understand all safety, operation and maintenance information provided in the operation manual.

WEAR SAFETY GLASSES
 Failure to wear safety glasses with side shields could result in serious eye injury or blindness.

DE-ENERGIZE, DEPRESSURIZE, DISCONNECT AND LOCK OUT ALL POWER SOURCES DURING MAINTENANCE
 Failure to De-energize, disconnect and lock out all power supplies before performing equipment maintenance could cause serious injury or death.

OPERATOR TRAINING
 All personnel must be trained before operating finishing equipment.

EQUIPMENT MISUSE HAZARD
 Equipment misuse can cause the equipment to rupture, malfunction, or start unexpectedly and result in serious injury.

KEEP EQUIPMENT GUARDS IN PLACE
 Do not operate the equipment if the safety devices have been removed.

PROJECTILE HAZARD
 You may be injured by venting liquids or gases that are released under pressure, or flying debris.

PINCH POINT HAZARD
 Moving parts can crush and cut. Pinch points are basically any areas where there are moving parts.

AUTOMATIC EQUIPMENT
 Automatic equipment may start suddenly without warning.

INSPECT THE EQUIPMENT DAILY
 Inspect the equipment for worn or broken parts on a daily basis. Do not operate the equipment if you are uncertain about its condition.

NEVER MODIFY THE EQUIPMENT
 Do not modify the equipment unless the manufacturer provides written approval.

KNOW WHERE AND HOW TO SHUT OFF THE EQUIPMENT IN CASE OF AN EMERGENCY

PRESSURE RELIEF PROCEDURE
 Always follow the pressure relief procedure in the equipment instruction manual.

NOISE HAZARD
 You may be injured by loud noise. Hearing protection may be required when using this equipment.

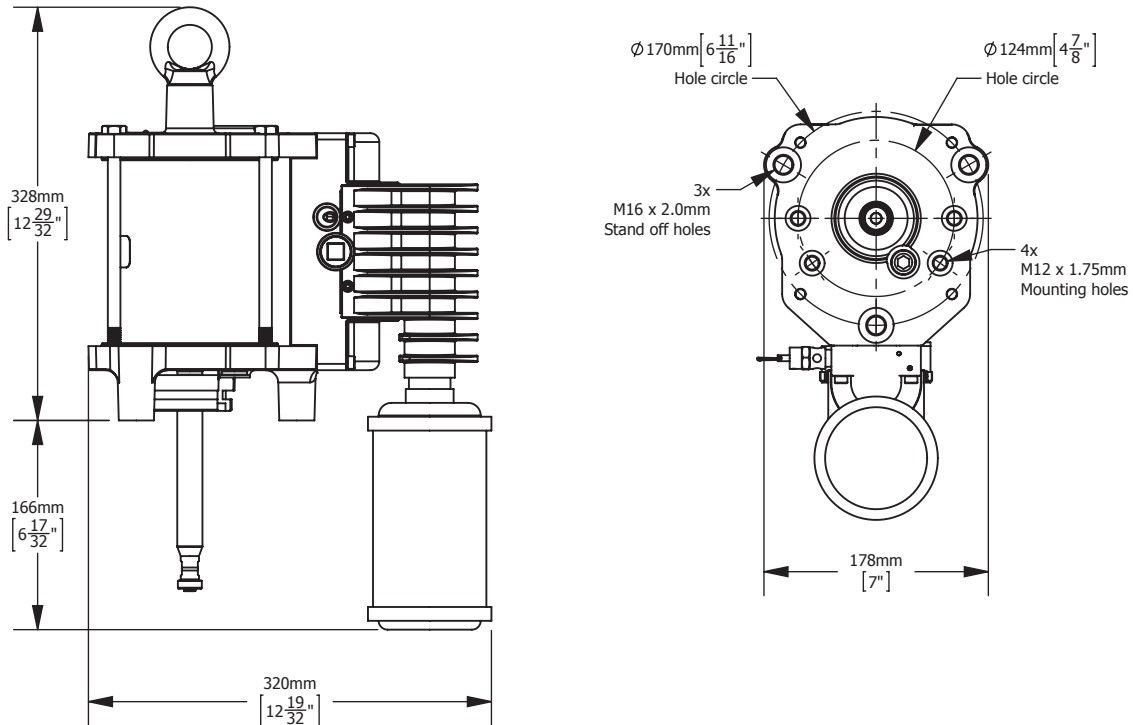
HIGH PRESSURE CONSIDERATION
 High pressure can cause serious injury. Relieve all pressure before servicing. Spray from the spray gun, hose leaks, or ruptured components can inject fluid into your body and cause extremely serious injury.

STATIC CHARGE
 Fluid may develop a static charge that must be dissipated through proper grounding of the equipment, objects to be sprayed and all other electrically conductive objects in the dispensing area. Improper grounding or sparks can cause a hazardous condition and result in fire, explosion or electric shock and other serious injury.

CA PROP 65
PROP 65 WARNING
 WARNING: This product contains chemicals known to the State of California to cause cancer and birth defects or other reproductive harm.

IT IS THE RESPONSIBILITY OF THE EMPLOYER TO PROVIDE THIS INFORMATION TO THE OPERATOR OF THE EQUIPMENT. FOR FURTHER SAFETY INFORMATION REGARDING THIS EQUIPMENT, SEE THE GENERAL EQUIPMENT SAFETY BOOKLET (77-5300).

AX110L AIR MOTOR ASSEMBLIES



MAINTENANCE

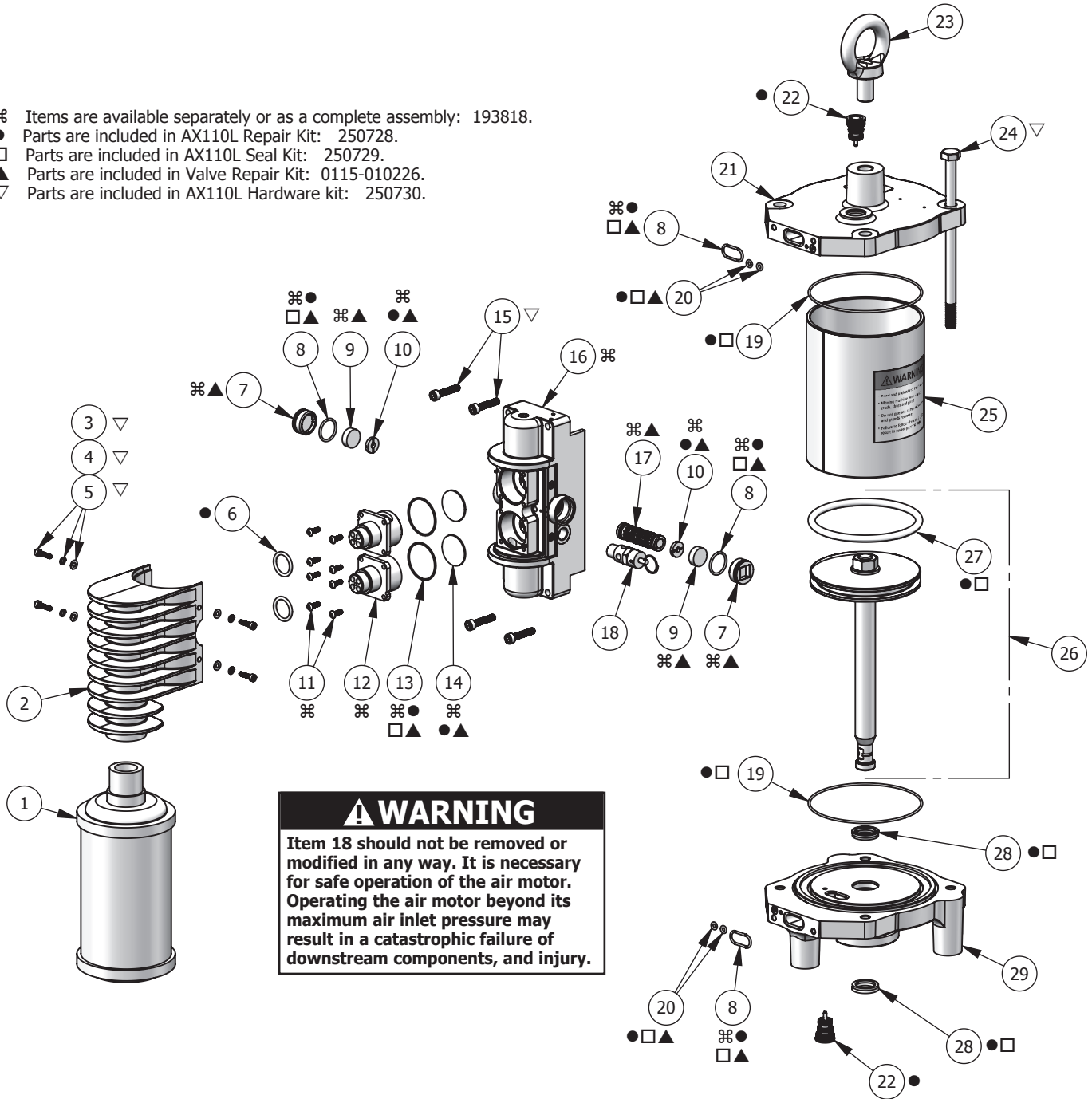
INSPECTION	OPERATION	
Daily	Check for general air leakage and correct motor operation.	
6 Month Test	Perform a pump stall test to ensure correct operation.	
	Perform a stall test on the pump assembly. If air is escaping through exhaust, check air motor piston seal and QEV piston, replace as required.	
12 to 36 Months (Typically 10 million pump cycles, dependent on air quality)	Replace air piston seal.	Order a 250728 Seal kit.
	Replace motor rod cartridge assembly. Replace poppet assemblies.	
	Inspect and replace if required: Main valve assembly parts	Order a 0115-010226 Valve repair kit.

TROUBLESHOOTING

SYMPTOM	POSSIBLE CAUSE	REMEDY
Motor will not run	No air supply.	Check air and fluid supply ball valves and supply hoses.
	Air piston seal worn.	Replace piston seal.
	Poppet assemblies are not working.	Switch/interchange poppet assemblies to isolate the faulty poppet, and clean or replace.
	Main valve assembly is not working.	Check the main valve assembly, and clean or replace.
	QEV's are not working.	Check for constant exhaust air when pump is not in a stalled condition. Check the QEV pistons, and clean or replace.
Pump runs but has excessive pulsation	Worn piston seal.	Replace piston seal.
	Worn/failed motor rod seals.	Replace motor rod cartridge assembly.
	Damaged QEV.	Inspect, clean and replace as required.
	Damaged poppet assembly.	Inspect, clean and replace as required.
	Air exhaust restricted	Inspect, clean and replace as required.

AX110L AIR MOTOR ASSEMBLIES

- ⌘ Items are available separately or as a complete assembly: 193818.
- Parts are included in AX110L Repair Kit: 250728.
- Parts are included in AX110L Seal Kit: 250729.
- ▲ Parts are included in Valve Repair Kit: 0115-010226.
- ▽ Parts are included in AX110L Hardware kit: 250730.



AX110L AIR MOTOR ASSEMBLIES

ITEM NO.	PART NO.	DESCRIPTION	QTY.
1	192821	MUFFLER	1
2	193825	EXHAUST ADAPTER	1
3	165528	▽ SOCKET HEAD CAP SCREW	4
4	165971	▽ SPRING LOCKWASHER	4
5	165970	▽ PLAIN WASHER	4
6	161995	● O-RING	2
7	0115-010018	⌘▲ VALVE BLOCK END CAP	2
8	0115-010049	⌘●□▲ O-RING	4
9	0115-010017	⌘▲ MAGNET	2
10	0115-010016	⌘●▲ BUMPER	2
11	0115-010073	⌘ BUTTON HEAD CAP SCREW	8
12	194557	⌘ QUICK EXHAUST VALVE CAGE	2
13	0115-010021	⌘●□▲ O-RING	2
14	0115-010020	⌘●▲ DIAPHRAGM	2
15	163920	▽ SOCKET HEAD CAP SCREW	4
16	193817	⌘ VALVE BLOCK	1
17	0115-010015	⌘▲ SPOOL AND SLEEVE ASSEMBLY	1
18	0114-014774	SAFETY VALVE, 8 BAR [116 PSI]	1
	193539	SAFETY VALVE, 7 BAR [101 PSI]	
	193538	SAFETY VALVE, 6 BAR [87 PSI]	
	0114-014716	SAFETY VALVE, 5 BAR [72 PSI]	
19	162822	●□ CYLINDER SEAL, AX110L	2
20	0115-010051	●□▲ O-RING	4
21	194082	UPPER END CAP, AX110L	1
22	0115-010037	● POPPET ASSEMBLY	2
23	193689	EYEBOLT	1
24	162818	▽ HEX HEAD CAP SCREW	4
25	194072	CYLINDER, AX110L	1
26	193836	PISTON ASSEMBLY, AX110L	1
27	162821	●□ PISTON SEAL, AX110L	1
28	0115-010122	●□ U-CUP SEAL	2
29	193819	LOWER END CAP ASSEMBLY, AX110L	1

⌘ Items are available separately or as a complete assembly: 193818.

● Parts are included in AX110L Repair Kit: 250728.

□ Parts are included in AX110L Seal Kit: 250729.

▲ Parts are included in Valve Repair Kit: 0115-010226.

▽ Parts are included in AX110L Hardware kit: 250730.

NOTE

See page 6 for kits details.

Recommended grease: AGMD-010 Silicone free grease 50g [2oz] tube

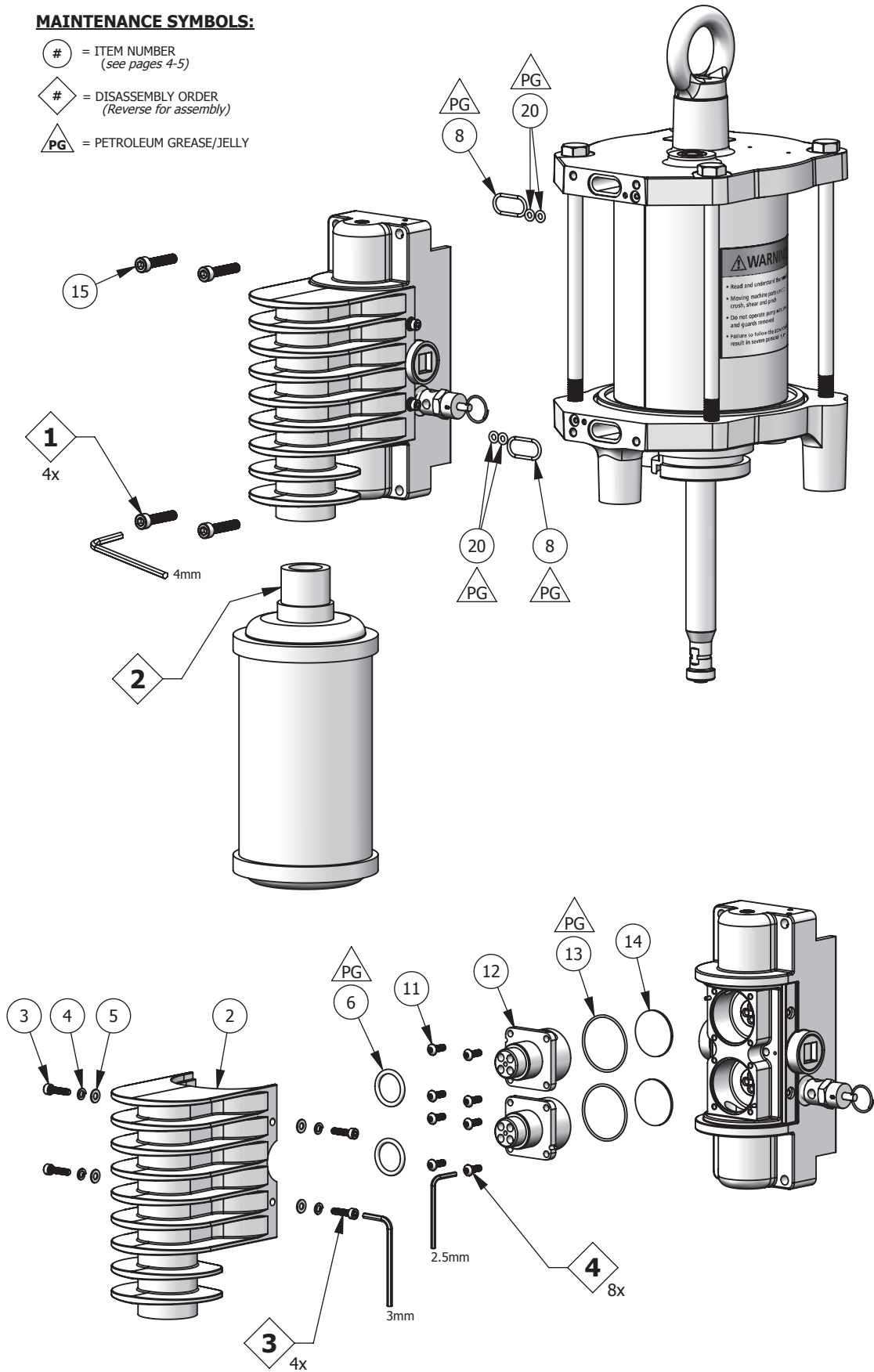
AX110L SERVICE KITS

ITEM NO.	PART NO.	DESCRIPTION	● 250728	□ 250729	▲ 0115-010226	▽ 250730
			REPAIR KIT	SEAL KIT	VALVE REPAIR KIT	HARDWARE KIT
3	165528	SOCKET HEAD CAP SCREW				4
4	165971	SPRING LOCKWASHER				4
5	165970	PLAIN WASHER				4
6	161995	O-RING	2			
7	0115-010018	VALVE BLOCK END CAP			2	
8	0115-010049	O-RING	4	4	4	
9	0115-010017	MAGNET			2	
10	0115-010016	BUMPER	2		2	
13	0115-010021	O-RING	2	2	2	
14	0115-010020	DIAPHRAGM	2		2	
15	163920	SOCKET HEAD CAP SCREW				4
17	0115-010015	SPOOL AND SLEEVE ASSEMBLY			1	
19	162822	CYLINDER SEAL, AX110L	2	2		
20	0115-010051	O-RING	4	4	4	
22	0115-010037	POPPET ASSEMBLY	2			
24	162818	HEX HEAD CAP SCREW				4
27	162821	PISTON SEAL, AX110L	1	1		
28	0115-010122	U-CUP SEAL	2	2		

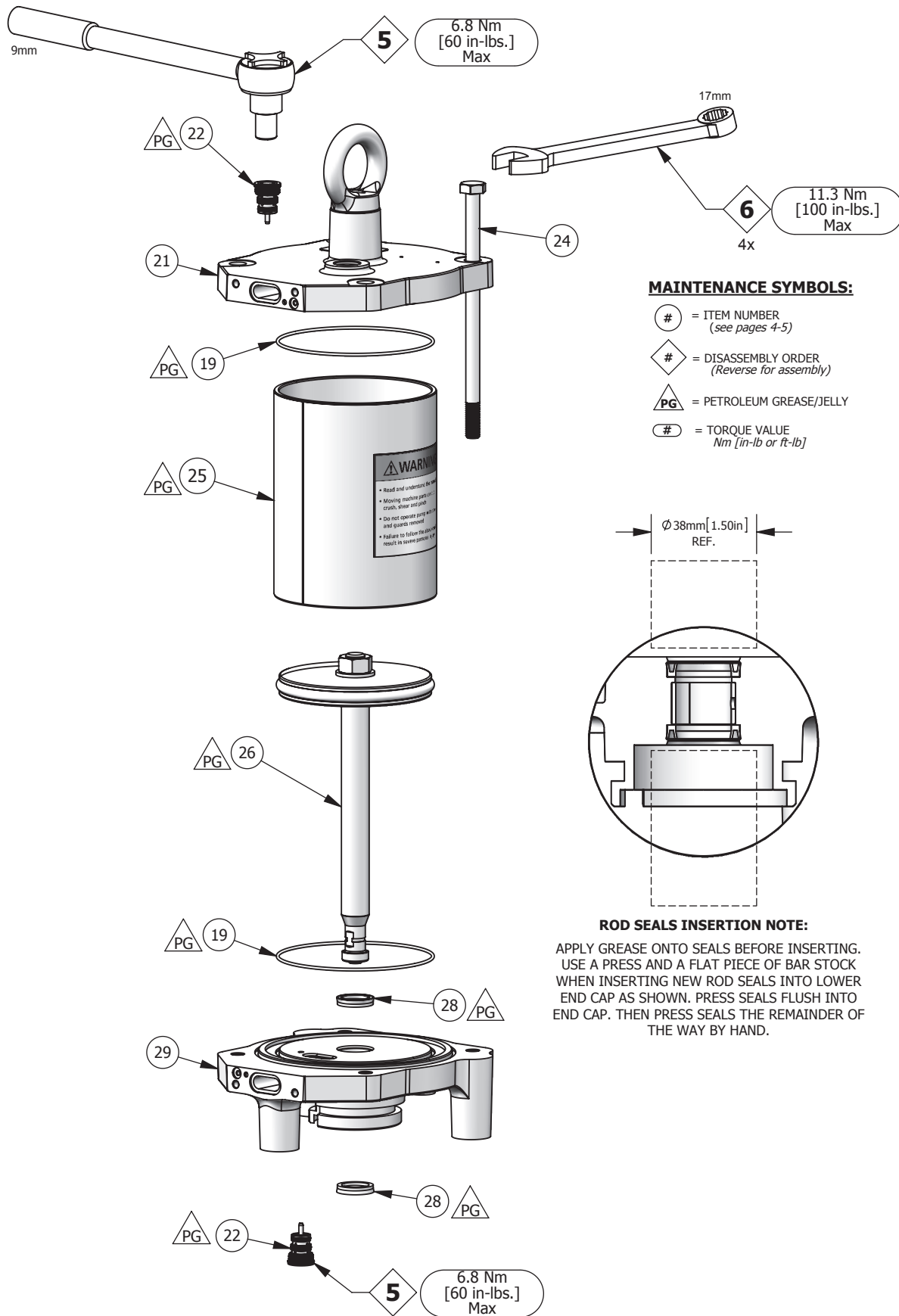
AX110L AIR MOTOR ASSEMBLIES – MAINTENANCE

MAINTENANCE SYMBOLS:

- # = ITEM NUMBER
(see pages 4-5)
- # = DISASSEMBLY ORDER
(Reverse for assembly)
- PG = PETROLEUM GREASE/JELLY



AX110L AIR MOTOR ASSEMBLIES – MAINTENANCE



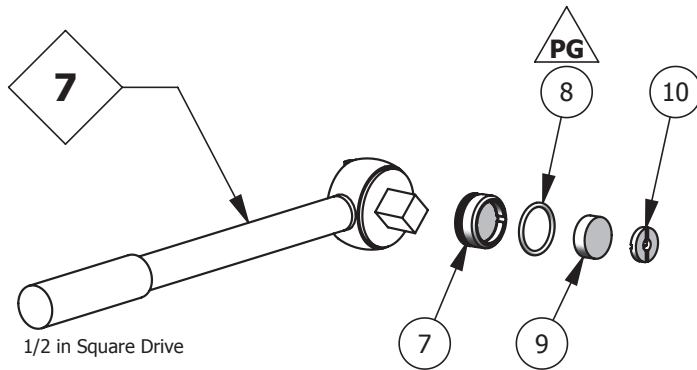
AX110L AIR MOTOR ASSEMBLIES – MAINTENANCE

MAINTENANCE SYMBOLS:

= ITEM NUMBER
(see pages 4-5)

= DISASSEMBLY ORDER
(Reverse for assembly)

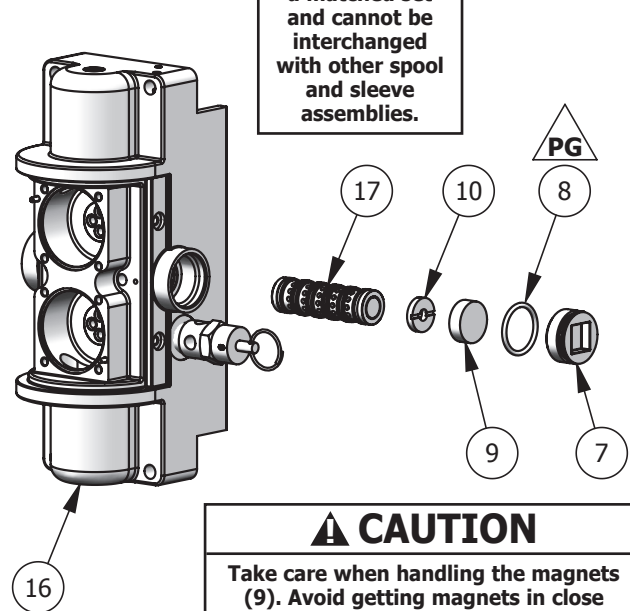
PG = PETROLEUM GREASE/JELLY



1/2 in Square Drive

⚠ DANGER	
	<p>You are in the presence of magnetic fields which may interfere with the operation of certain pacemakers.</p>

NOTE
<p>Spool and sleeve assembly (17) is a matched set and cannot be interchanged with other spool and sleeve assemblies.</p>



⚠ CAUTION
<p>Take care when handling the magnets (9). Avoid getting magnets in close proximity to each other. Injury or damage to magnets may result.</p>

WARRANTY POLICY

Binks products are covered by Carlisle Fluid Technologies one year materials and workmanship limited warranty. The use of any parts or accessories, from a source other than Carlisle Fluid Technologies, will void all warranties. For specific warranty information please contact the closest Carlisle Fluid Technologies location listed below.

Carlisle Fluid Technologies reserves the right to modify equipment specifications without prior notice. DeVilbiss®, Ransburg®, ms®, BGK®, and Binks® are registered trademarks of Carlisle Fluid Technologies, Inc.

©2018 Carlisle Fluid Technologies, Inc.
All rights reserved.

Binks is part of Carlisle Fluid Technologies, a global leader in innovative finishing technologies. For technical assistance or to locate an authorized distributor, contact one of our international sales and customer support locations.

USA/Canada

info@carlisleleft.com
Tel: 1-888-992-4657
Fax: 1-888-246-5732

China

mkt@carlisleleft.com.cn
Tel: +8621-3373 0108
Fax: +8621-3373 0308

Germany

info@carlisleleft.eu
Tel: +49 (0) 6074 403 1
Fax: +49 (0) 6074 403 281

United Kingdom

info@carlisleleft.eu
Tel: +44 (0)1202 571 111
Fax: +44 (0)1202 573 488

Mexico

ventas@carlisleleft.com.mx
Tel: +52 55 5321 2300
Fax: +52 55 5310 4790

Australia

sales@carlisleleft.com.au
Tel: +61 (0) 2 8525 7555
Fax: +61 (0) 2 8525 7575

Japan

overseas-sales@carlisleleft.co.jp
Tel: +81 45 785 6421
Fax: +81 45 785 6517

For the latest information about our products, visit www.carlisleleft.com.