



QuickHeat™ Hose

Faster, more consistent heat to finish the job sooner

Over the course of 5 years, Carlisle® assembled a team of industry leading engineers, experienced technicians, and business owners to engineer the future of the spray foam insulation industry: the IntelliSpray System. We heard your frustrations and tackled three key issues facing industry sprayers: not enough DeltaT, startup takes too long, and inadequate hose durability.

"Over all smoothest equipment I've ever used."

– Mark G., Owner and Operator



FAST AND RELIABLE HEAT

- Unique, embedded heater wire floats in hose fluid stream achieving >100F DeltaT
- Multi-zone design allows separate pre-heating of A & B materials



REAL TIME SYSTEM CONTROL BY INTELLISENSE

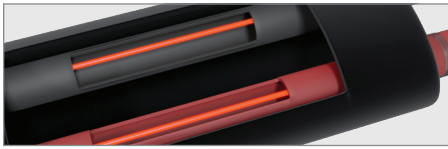
- Pressure and temperature data communicated and controlled within hose
- Built-in optical indicators and bluetooth communication to keep operators in the know



IMPROVED HOSE LIFE

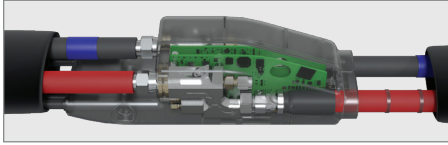
- Replace A & B side of hose independently
- All electronics and sensors are fully potted to protect them from the environment

QuickHeat Hose



Cut Labor and Material Costs

- Heating element in fluid drives higher DeltaT
- Cut warmup and reheating time by over 50%



True Ratio Control



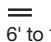
- Independent heating of A & B materials maximizes ratio control
- Hose works with proportioner to manage pressure and temperature control from the spray area



Smarter, More Durable Rig

- Fewer fluid and electrical connections improves reliability and eliminates common hose fail point
- Re-useable, non-snagging scuff jacket for worry free operation and easy service

PRODUCT SPECIFICATIONS

Four Zone Configuration: Total Hose Length 120' – 200'






Six Zone Configuration: Total Hose Length 220' – 350'

Hose Segment	Hose Length	Heat Power	Sensors	Digital Connections
Master	150'	3.6 kW	N/A	EtherCat® Bluetooth®
Master	100'	2.4 kW		
Mid	150'	3.6 kW	Embedded temperature sensors	
Mid	100'	2.4 kW		
Smart End	40'	1.0 kW	Embedded temperature and pressure sensors	
Smart End	20'	0.5 kW		
Unheated Whip	10'	N/A	N/A	N/A
Unheated Whip	6'			

Max Fluid WPR	2,250 psi (155 bar, 15.5 MPa)
Max Air WPR	130 psi (8.96 bar, 0.896 MPa)
Max Temp	200°F (93.3°C)
Wetted Parts	Nylon, Viton, Delrin, Stainless Steel, Plated Steel
Fluid Connections	3/8" JIC 5 (A), 3/8" JIC 5 (B)
Hose Heat Power	240V AC

EtherCat is a registered Trademark of Beckhoff Automation. Bluetooth is a registered trademark of Bluetooth SIG, Inc

Transform Your Business



1 Schedule a 30-minute Needs Analysis

Go to www.intellispraysystem.com

2



See the Equipment for Yourself in an On-site Demo

3



Set Yourself Apart from Competitors with Your New Equipment



Carlisle Fluid Technologies

16430 N. Scottsdale Rd. Suite 450, Scottsdale, AZ 85254

Phone: 800-992-4657 | For Info: marketing@carlisleft.com | www.carlisleft.com